

FOR SALE

RESIDENTIAL - EXECUTIVE CONDO 1,464SQFT (136SQM) / CALL FOR PRICE!

+65 9023 9177



5 - Bedroom Luxury

TYPE E1-P

130 sqm | 1,464 sqft

TYPE E1

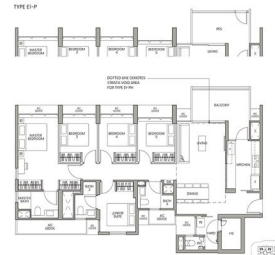
130 sqm | 1,464 sqft

TYPE E1-PH

150 sqm | 1,629 sqft

(Exclusive of 20 sqm photo void over living/dining)

Tower 33 #14-05



RESIDENTIAL - EXECUTIVE CONDO

31, 33, 35, 37, 39, 41, 43, 45, 47 FERVALE LANE,
SELETAR, YIO CHU KANG, SINGAPORE 797504

- LISTING ID: SGLD03419482
- TENURE: LEASEHOLD 99
- TITLE: N/A
- SIZE BUILT-UP: 1,464SQFT (136SQM)
- SIZE LAND: 4.233AC (1.713HA)
- NO. OF FLOORS: 14
- FLOOR/LEVEL: N/A - N/A
- BED ROOMS: 5
- BATH ROOMS: 4
- MAIDS ROOMS: N/A
- PARKING SPACES: N/A
- LAYOUT TYPE: OTHER
- FACING: N/A
- VIEWING: OTHER
- SELLING PRICE: **CALL FOR PRICE!**
- COMPLETION YEAR: 2026
- CONDITION: ORIGINAL CONDITION
- FURNISHING: PARTIALLY FURNISHED
- LISTING DATE: JUL 09, 2021

PARC GREENWICH

Executive Condo for Sale: Partially furnished, 5 bedroom, 4 bathroom. Completed in 2026, this unit is in original condition. Tenure: Leasehold 99 Located in Singapore's district D28 near Seletar, Yio Chu K in the area North East (North East region).

INTERIOR FACILITIES

- Air-Conditioning
- Bombshelter
- Balcony
- Walk-In-Wardrobe

OTHER INTERIOR FEATURES

- Cooker Hob/Hood
- Oven / Microwave
- Intercom
- Water Heater

EXTERIOR FACILITIES

- 24 Hours Security
- Clubhouse
- Billiards Room
- Covered Car Park

VISIT THIS PROPERTY AT: <https://www.investfareast.com/property/SGLD03419482>

ZOE TAN - HUTTONS ASIA PTE LTD

3 Bishan Place #05-01 CPF Bishan Building
D20, 579838, Singapore

+65 9023 9177
WhatsApp Me

zoetan@yahoo.com

<https://www.investfareast.com>



Scan QR Code

Huttons® Call for Viewing
The Agency of Choice +65-90239177